

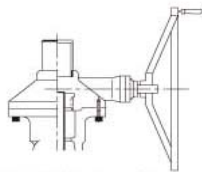
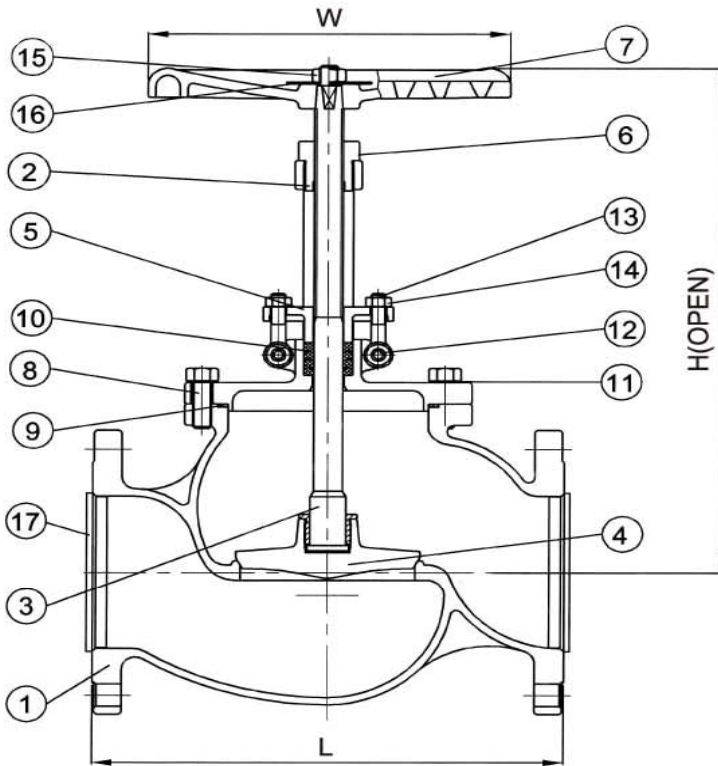


Model : M-20

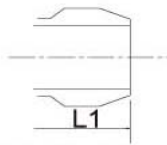
CAST STAINLESS STEEL GLOBE VALVE CLASS 10K/150LB OUTSIDE SCREW & YOKE BOLTED BONNET FLANGE ENDS

MODEL- **M** -20

APPLICABLE STANDARDS :
SHELL WALL THICKNESS ANSI B16.34
FACE TO FACE ANSI B16.10/JISB2002
END FLANGES ANSI B16.5/JISB2210



Available With Gear Operator



Buttwelding Ends

PARTS AND MATERIAL (ASTM)

17	COVER	PE		
16	WASHER	SUS304		
15	WHEEL NUT	A194-8		
14	EYE BOLT NUT	A194-8		
13	EYE BOLT	A194-B8		
12	EYE BOLT PIN	A276-304		
11	WASHER	A267-304		
10	PACKING	PTFE/GRAPHITE		
9	GASKET	SPIRAL WOUND/GRAPHITE/PTFE		
8	BONNET BOLT	A193-B8		
7	HAND WHEEL	DUCTILE IRON		
6	BUSH	BRONZE		
5	GRAND	CF8	CF8M	CF3M
4	DISC SEAT	SUS304	SUS316	SUS316L
3	STEM	SUS304	SUS316	SUS316L
2	BONNET	CF8	CF8M	CF3M
1	BODY	CF8	CF8M	CF3M
NO.	SUBJECT	304SS	316SS	316L
		MATERIAL		

TEST PRESSURE TO API 598

	ANSI 150LB	JIS 10k
SHELL TEST(WATER)	450 PSI (32 kg/cm ²)	20 kg/cm ²
SEAT TEST(WATER)	314 PS I(22 kg/cm ²)	15 kg/cm ²
SEAT TEST(AIR)	80 PSI (6 kg/cm ²)	6 kg/cm ²

DIMENSION TABLE:

SIZE	IN	1/2	3/4	1	1-1/2	2	2-1/2	3	4	5	6	8	10	12	14	16
	MM	15	20	25	40	50	65	80	100	125	150	200	250	300	350	400
L/L1	108	117	127	165	203	216	241	292	356	406	495	622	698	787	864	
H	190	195	208	265	275	320	360	415	510	535	600	718	760	1050	1200	
W	100	100	125	140	170	180	190	220	290	350	400	500	500	500	600	

Class 300/600 Cast Steel Globe Valve

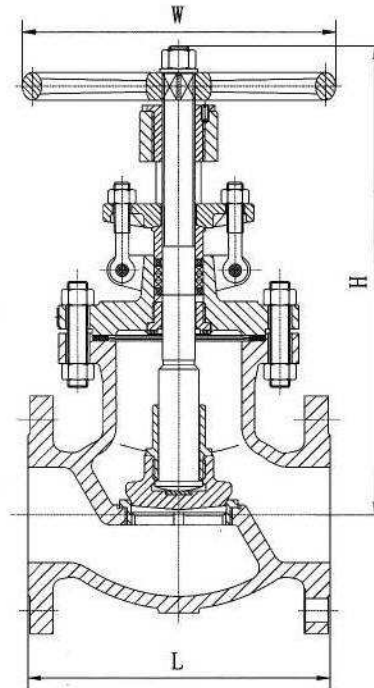


Figure No.

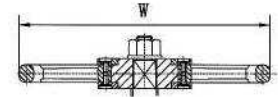
GL0301 1XU GL0601 1XU
 GL0301 2XU GL0601 2XU
 GL0301 3XU GL0601 3XU

STANDARD MATERIALS OF PARTS

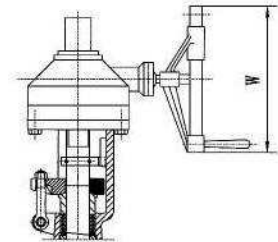
Parts	Materials
Body	ASTM A216-WCB
Bonnet	ASTM A216-WCB
Stem	ASTM A182-F6a
Disc	ASTM A105+Cr13 Overlay ASTM A182-F6a(6" & smaller)
Yoke sleeve	ASTM A439 D-2
Gland flange	ASTM A216-WCB
Handwheel	Ductile iron
Impact block	Carbon steel
Retain plate	Carbon steel
Seat ring	ASTM A105+STL. Overlay
Disc nut	ASTM A276-420
Back seat	ASTM A276-420
Gland	ASTM A276-420
Gasket	Spiral wound graphite
Packing	Graphite
Yoke	ASTM A216-WCB
Bonnet stud/nut	ASTM A193-B7/ASTM A194-2H
Gland bolt/nut	ASTM A193-B7/ASTM A194-2H
Spacer ring	ASTM A276-420
Stem washer	ASTM A276-420
Grease fitting	Steel



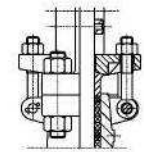
Impact Handwheel For
 300LB 6" & Larger
 600LB 4" & Larger



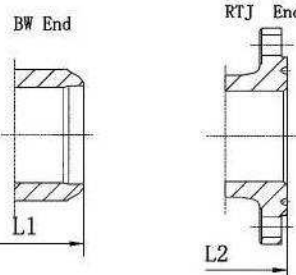
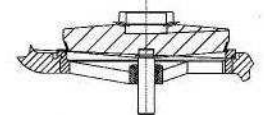
Gear Operation For
 Optional Standard
 300LB 8" to 12" 14" & Larger
 600LB 6" to 10" 12" & Larger



Yoke For 600LB 8" & Larger



For 16"



DIMENSIONS AND WEIGHTS

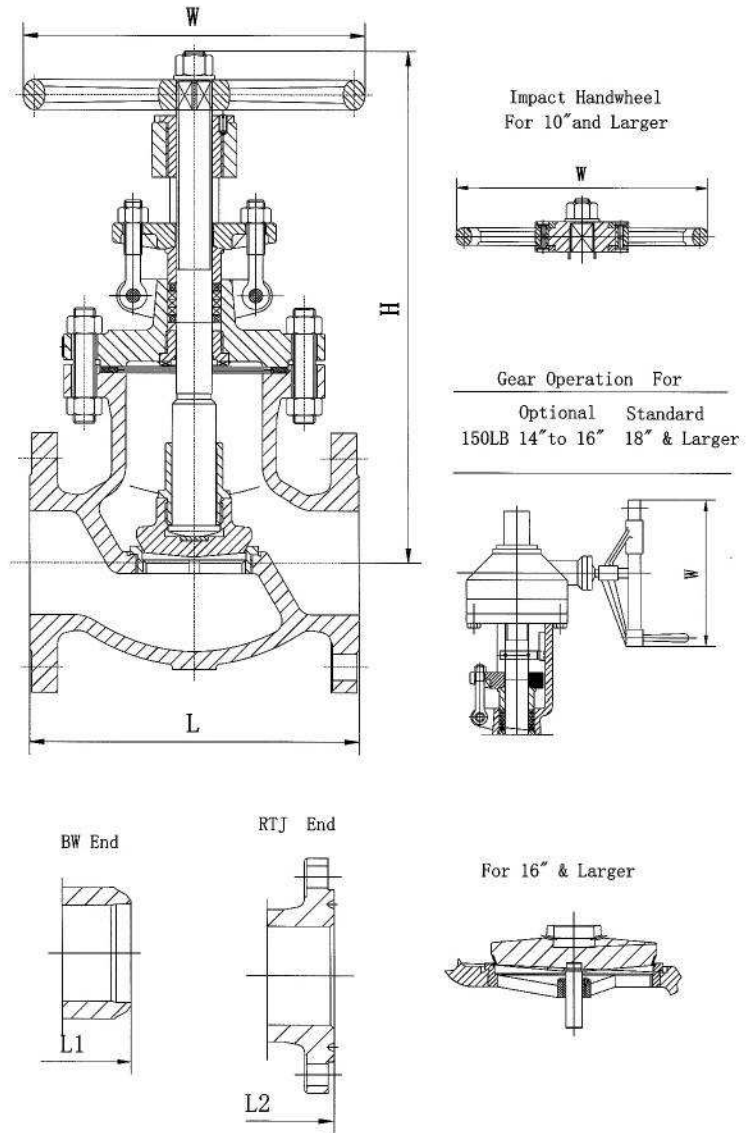
	NPS DN	in mm	2	2-1/2	3	4	5	6	8	10	12	14	16	
			50	65	80	100	125	150	200	250	300	350	400	
300#	L-L1 (RF-BW)	in mm	10.5 267	11.5 292	12.5 318	14 356	15.75 400	17.5 445	22 559	24.5 622	28 711	33 838	34 864	
	L2 (RTJ)	in mm	11.12 283	12.12 308	13.12 333	14.62 371	16.37 416	18.12 460	22.62 575	25.12 638	28.62 727	33.62 854	34.62 879	
	W	in mm	8 200	10 250	10 250	14 350	18 450	20 500	22 560	24 600	26 650	24 610	24 610	
	H (open)	in mm	13.9 353.5	15.3 388.5	16.6 420.5	19.5 495.5	22.7 576.5	26.6 674.5	35.9 911.5	37.4 949	40.6 1032	44.5 1130	51.6 1310	
	WT (KG)	RF BW	25 19	38 29	49 38	76 58	125 104	168 137	282 237	385 319	724 632	1125 975	1650 1450	
	600#	L-L1 (RF-BW)	in mm	11.5 292	13 330	14 356	17 432	20 508	22 559	26 660	31 787	33 838	35 889	39 991
		L2 (RTJ)	in mm	11.62 295	13.12 333	14.12 359	17.12 435	20.12 511	22.12 562	26.12 663	31.12 790	33.12 841	35.12 892	39.12 994
W		in mm	10 250	10 250	14 350	18 450	20 500	22 560	24 600	28 700	24 610	24 610	30 762	
H (open)		in mm	15.6 396.5	17.6 446	19.5 495.5	23.6 599	27.6 700	31.1 791	39.9 1014	46.5 1180	55 1397	57.1 1450	63.4 1610	
WT (KG)		RF BW	36 29	50 40	78 64	120 91	187 142	284 227	543 460	700 562	900 739	1620 1330	2160 1750	



Figure No.
GL0101 1XU
GL0101 2XU
GL0101 3XU

STANDARD MATERIALS OF PARTS

Parts	Materials
Body	ASTM A216-WCB
Bonnet	ASTM A216-WCB
Stem	ASTM A182-F6a
Disc	ASTM A105+Cr13 Overlay ASTM A182-F6a(6" & smaller)
Yoke sleeve	ASTM A439 D-2
Gland flange	ASTM A216-WCB
Handwheel	Ductile iron
Impact block	Carbon steel
Retain plate	Carbon steel
Seat ring	ASTM A105+STL. Overlay
Disc nut	ASTM A276-420
Back seat	ASTM A276-420
Gland	ASTM A276-420
Gasket	Spiral wound graphite
Packing	Graphite
Yoke	ASTM A216-WCB
Bonnet stud/nut	ASTM A193-B7/ASTM A194-2H
Gland bolt/nut	ASTM A193-B7/ASTM A194-2H
Spacer ring	ASTM A276-420
Stem washer	ASTM A276-420
Grease fitting	Steel



DIMENSIONS AND WEIGHTS

150#	NPS	in	2	2-1/2	3	4	5	6	8	10	12	14	16	18
	DN	mm	50	65	80	100	125	150	200	250	300	350	400	450
L-L1 (RF-BW)	in	mm	8	8.5	9.5	11.5	14	16	19.5	24.5	27.5	31	36	38.5
	mm	203	216	241	292	356	406	495	622	699	787	914	978	
L2 (RTJ)	in	mm	8.5	9.0	10.0	12.0	14.5	16.5	20.0	25.0	28.0	31.5	36.5	39
	mm	216	229	254	305	368	419	508	635	711	800	927	991	
W	in	mm	8	10	10	12	14	14	16	20	20	22	26	24
	mm	200	250	250	300	350	350	400	500	500	560	650	610	
H (open)	in	mm	13.3	14.7	15.6	18.7	19.6	20.6	23.1	29.1	33.9	37.4	39.2	44.9
	mm	338	373	396	476	497	524	588	738	862	950	994	1140	
WT (KG)	RF		21	28	35	58	82	100	160	253	398	550	724	1400
	BW		17	20	27	47	71	86	138	219	362	491	650	1250



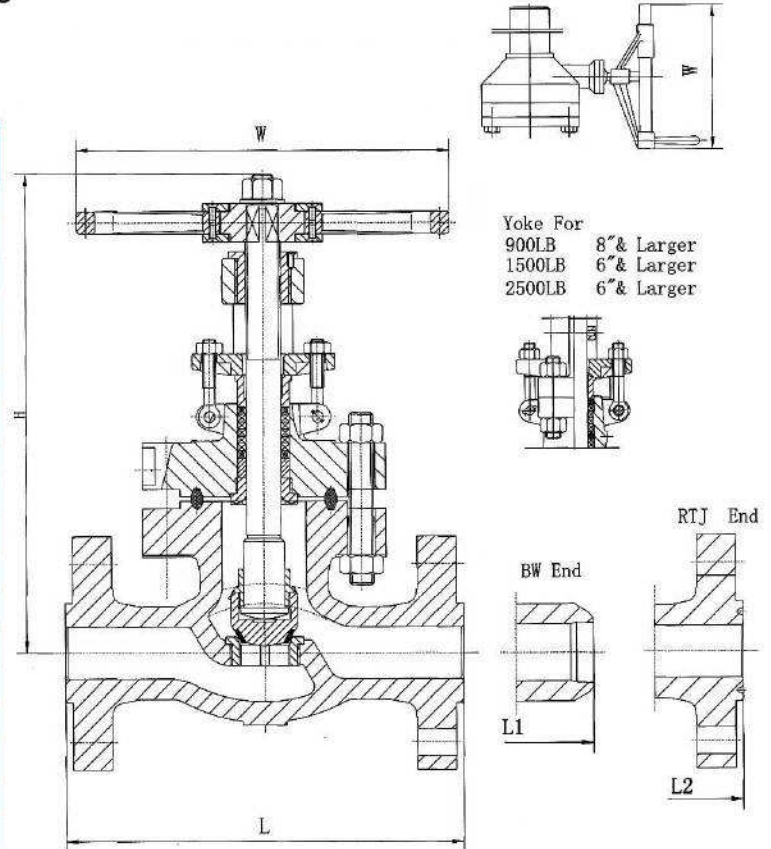
Figure No.

GL0901 1XU	GL1501 1XU	GL2501 1XU
GL0901 2XU	GL1501 2XU	GL2501 2XU
GL0901 3XU	GL1501 3XU	GL2501 3XU

	Optional	Standard
900LB	4" to 6"	8" & Larger
1500LB	2" to 3"	4" & Larger
2500LB	2"	3" & Larger

STANDARD MATERIALS OF PARTS

Parts	Materials
Body	ASTM A216-WCB
Bonnet	ASTM A216-WCB
Stem	ASTM A182-F6a, ENP
Disc	ASTM A105+STL. Overlay
Yoke sleeve	ASTM A439 D-2
Gland flange	ASTM A216-WCB
Handwheel	Ductile iron
Impact block	Carbon steel
Retain plate	Carbon steel
Seat ring	ASTM A105+STL. Overlay
Disc nut	ASTM A276-420
Back seat	ASTM A276-420
Gland	ASTM A276-420
Gasket	Soft Iron
Packing	Graphite
Yoke	ASTM A216-WCB
Bonnet stud/nut	ASTM A193-B7/ASTM A194-2H
Gland bolt/nut	ASTM A193-B7/ASTM A194-2H
Spacer ring	ASTM A276-420
Stem washer	ASTM A276-420
Grease fitting	Steel



	Optional	Standard
900LB	8" & Larger	
1500LB	6" & Larger	
2500LB	6" & Larger	

DIMENSIONS AND WEIGHTS

	NPS DN	in mm	2	2-1/2	3	4	6	8
			50	65	80	100	150	200
900#	L-L1 (RF-BW)	in mm	14.5 368	16.5 419	15 381	18 457	24 610	29 737
	L2 (RTJ)	in mm	14.62 371	16.62 422	15.12 384	18.12 460	24.12 613	29.12 740
	W	in mm	14 350	14 350	18 450	20 500	24 610	24 610
	H (open)	in mm	23.2 590	26 660	27.5 699	31.3 795	43.6 1108	46.6 1184
	WT (KG)	RF BW	95 75	138 112	108 85	195 158	435 360	720 597
	1500#	L-L1 (RF-BW)	in mm	14.5 368	16.5 419	18.5 470	21.5 546	27.75 705
L2 (RTJ)		in mm	14.62 371	16.62 422	18.62 473	21.62 549	28.00 711	33.13 842
W		in mm	14 350	14 350	20 500	22 560	24 610	24 610
H (open)		in mm	21.7 550	22.5 572	22.9 582	31.3 795	50.3 1278	77.2 1960
WT (KG)		RF BW	95 75	138 112	215 179	350 299	560 462	990 830

2500#	L-L1 (RF-BW)	in mm	17.75	20	22.75	26.5	36	40.25
			451	508	578	673	914	1022
2500#	L2 (RTJ)	in mm	17.88	20.25	23.00	26.88	36.50	40.88
			454	514	584	683	927	1038
2500#	W	in mm	16	20	22	24	24	24
			400	500	560	610	610	610
2500#	H (open)	in mm	28.3	31.5	34.8	49.6	75	97
			720	800	885	1260	1905	2465
2500#	WT (KG)	RF BW	176	264	308	759	1990	4390
			141	214	238	644	1700	3950