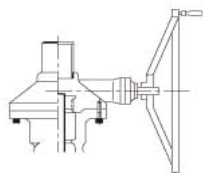
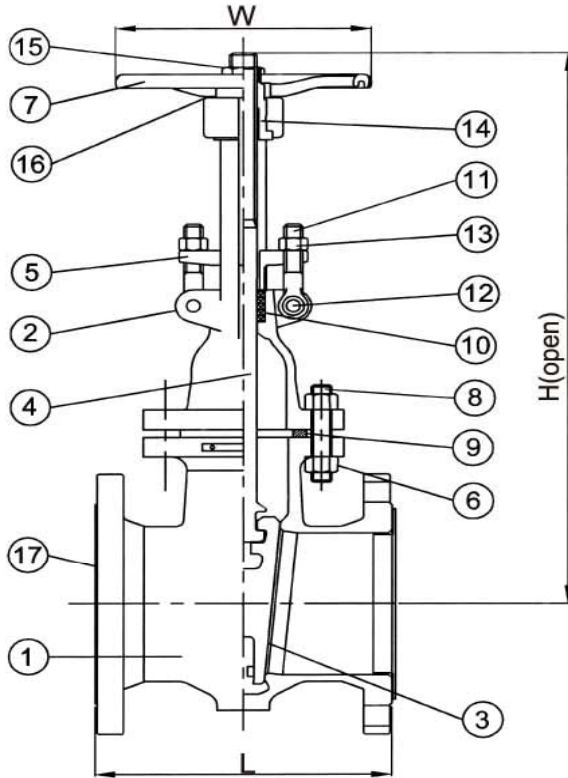


CAST STAINLESS STEEL GATE VALVE CLASS 10K/150LB OUTSIDE SCREW & YOKE BOLTED BONNET FLANGE ENDS

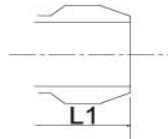
MODEL- M -18

APPLICABLE STANDARDS :

GATE VALVES API 603
SHELL WALL THICKNESS ANSI B16.34
FACE TO FACE ANSI B16.10/JISB2002
END FLANGES ANSI B16.5/JISB2210



Available With Gear Operator



Buttwelding Ends

PARTS AND MATERIAL(ASTM)

17	COVER	PE		
16	WASH	SUS304		
15	WHEEL NUT	STEEL		
14	YOKE SLEEVE	BRONZE		
13	EYE BOLT NUT	A194-8		
12	BOLT PIN	A276-304		
11	EYE BOLT	A193-B8		
10	PACKING	PTFE/GRAPHITE		
9	GASKET	V#1500/GRAPHITE/PTFE		
8	BONNET BOLT	A193-B8		
7	HAND WHEEL	DUCTILE IRON		
6	BONNET NUT	A194-8		
5	GLAND	CF8	CF8M	CF3M
4	STEM	SUS304	SUS316	SUS316L
3	DISC	CF8	CF8M	CF3M
2	BONNET	CF8	CF8M	CF3M
1	BODY	CF8	CF8M	CF3M
NO.	SUBJECT	304SS	316SS	316L
		MATERIAL		

TEST PRESSURE TO API 598

	ANSI 150LB	JIS 10k
SHELL TEST(WATER)	450 PSI (32kg/cm ²)	20 kg/cm ²
SEAT TEST(WATER)	314 PSI (22kg/cm ²)	15 kg/cm ²
SEAT TEST(AIR)	80 PSI (6kg/cm ²)	6 kg/cm ²

DIMENSION TABLE:

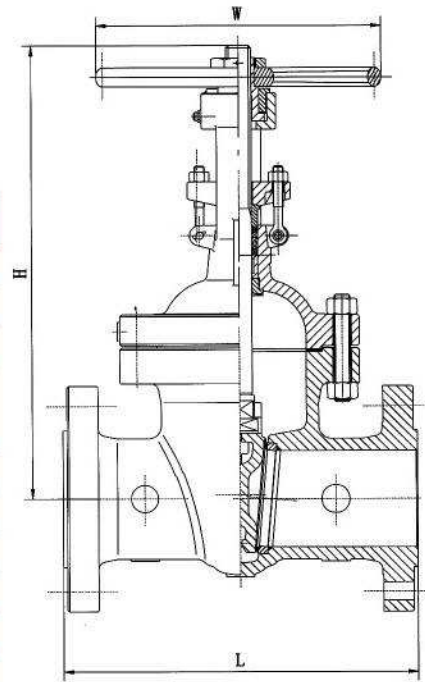
SIZE	IN	1/2	3/4	1	1-1/2	2	2-1/2	3	4	5	6	8	10	12	14	16	18	20	24
	MM	15	20	25	40	50	65	80	100	125	150	200	250	300	350	400	450	500	600
L/L1	108	117	127	165	178	190	203	229	254	267	292	330	356	381	406	432	457	508	
H	205	209	225	288	340	398	490	577	695	770	990	1115	1385	1600	1700	1800	1900	2100	
W	100	100	120	170	170	170	189	222	290	290	350	400	400	500	500	500	600	600	



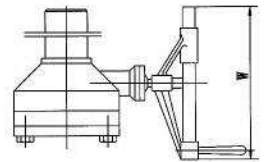
Figure No.
GA0601 1XU
GA0601 2XU
GA0601 3XU

STANDARD MATERIALS OF PARTS

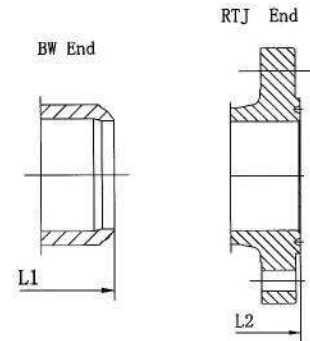
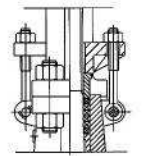
Parts	Materials
Body	ASTM A216-WCB
Bonnet	ASTM A216-WCB
Stem	ASTM A182-F6a
Wedge	ASTM A216-WCB+Cr13 Overlay ASTM A217-CA15(8" & smaller)
Yoke sleeve	ASTM A439 D-2
Gland flange	ASTM A216-WCB
Handwheel	Ductile iron
Seat ring	ASTM A105+STL. Overlay
Back seat	ASTM A276-420
Gland	ASTM A276-420
Gasket	Spiral wound graphite
Packing	Graphite
Retaining nut	Carbon steel
Bonnet stud/nut	ASTM A193-B7/ASTM A194-2H
Gland bolt/nut	ASTM A193-B7/ASTM A194-2H
Spacer ring	ASTM A276-420
Handwheel nut	Carbon steel
Grease fitting	Steel
Yoke	ASTM A216-WCB



Gear Operator
Optional For 8" to 12"
Standard For 14" & Larger



Yoke For 10" & Larger



DIMENSIONS AND WEIGHTS

NPS	in	2	2-1/2	3	4	5	6	8	10	12	14	16	18	20	24
DN	mm	50	65	80	100	125	150	200	250	300	350	400	450	500	600
L-L1 (RF-BW)	in	11.5	13	14	17	20	22	26	31	33	35	39	43	47	55
	mm	292	330	356	432	508	559	660	787	838	889	991	1092	1194	1397
L2 (RTJ)	in	11.62	13.12	14.12	17.12	20.12	22.12	26.12	31.12	33.12	35.12	39.12	43.12	47.25	55.38
	mm	295	333	359	435	511	562	663	790	841	892	994	1095	1200	1407
W	in	8	10	10	12	16	18	20	24	27	24	24	24	24	24
	mm	200	250	250	300	400	450	500	600	680	610	610	610	610	610
H (open)	in	16.5	18.7	20.4	25.4	30.3	33	40.3	48.4	57.1	62	70.7	76.02	86.9	102
	mm	418	476	518	646	770	839	1024	1229	1450	1574	1797	1931	2207	2582
WT (KG)	RF	36	52	67	112	170	234	393	610	890	1245	1530	1967	2450	3620
	BW	29	42	53	83	125	177	310	472	729	1054	1242	1626	2032	3017

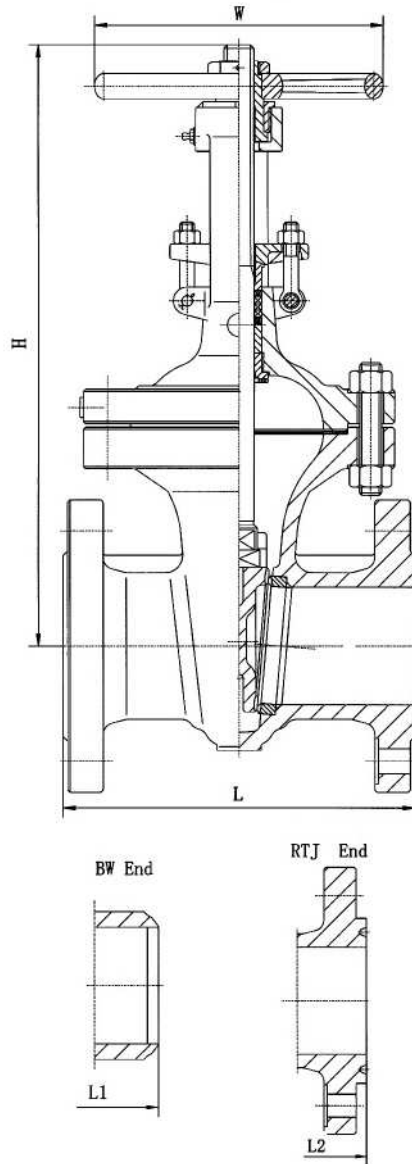


Figure No.

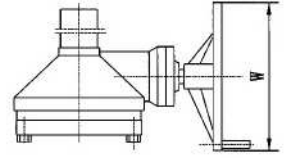
GA0301 1XU
GA0301 2XU
GA0301 3XU

STANDARD MATERIALS OF PARTS

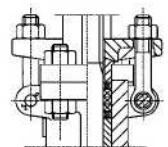
Parts	Materials
Body	ASTM A216-WCB
Bonnet	ASTM A216-WCB
Stem	ASTM A182-F6a
Wedge	ASTM A216-WCB+Cr13 Overlay ASTM A217-CA15(8" & smaller)
Yoke sleeve	ASTM A439 D-2
Gland flange	ASTM A216-WCB
Handwheel	Ductile iron
Seat ring	ASTM A105+STL. Overlay
Back seat	ASTM A276-420
Gland	ASTM A276-420
Gasket	Spiral wound graphite
Packing	Graphite
Retaining nut	Carbon steel
Bonnet stud/nut	ASTM A193-B7/ASTM A194-2H
Gland bolt/nut	ASTM A193-B7/ASTM A194-2H
Spacer ring	ASTM A276-420
Handwheel nut	Carbon steel
Grease fitting	Steel
Yoke	ASTM A216-WCB



Gear Operator
Optional For 8" to 16"
Standard For 18" & Larger



Yoke For 12" & Larger



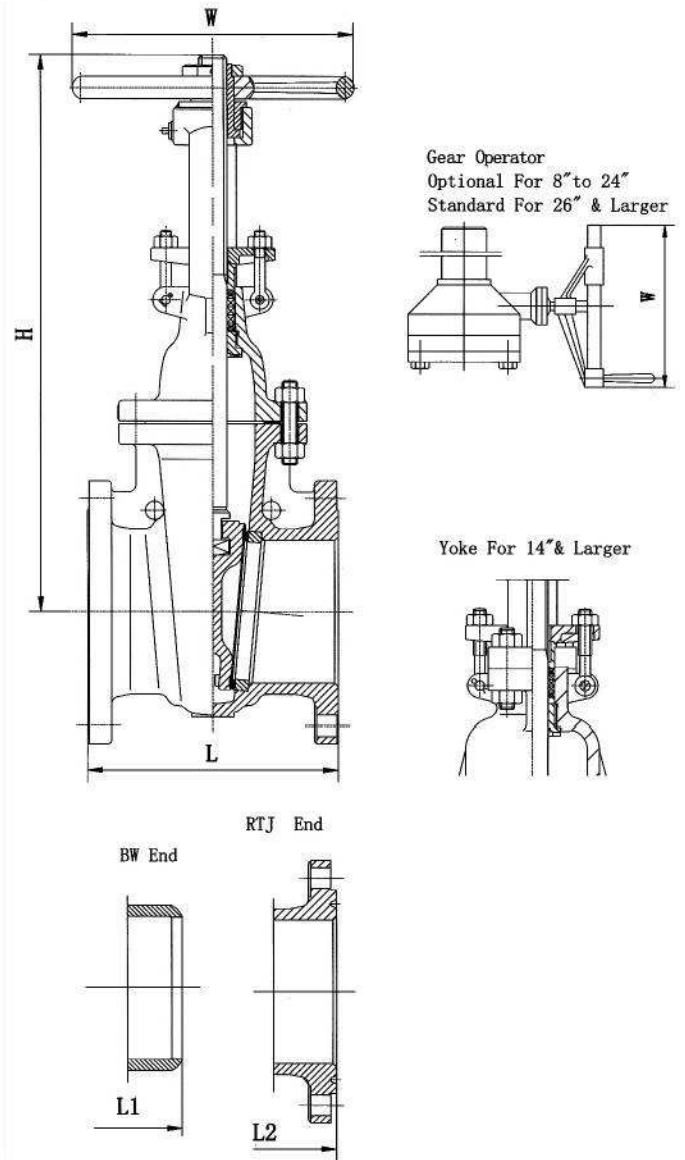
DIMENSIONS AND WEIGHTS

NPS	in	2	2-1/2	3	4	5	6	8	10	12	14	16	18	20	24	26	28	30
DN	mm	50	65	80	100	125	150	200	250	300	350	400	450	500	600	650	700	750
L-1 (RF-BW)	in	8.5	9.5	11.12	12	15	15.88	16.5	18	19.75	30	33	36	39	45	49	53	55
	mm	216	241	283	305	381	403	419	457	502	762	838	914	991	1143	1245	1346	1397
L2 (RTJ)	in	9.12	10.12	11.74	12.62	15.62	16.50	17.12	18.62	20.37	30.62	33.62	36.62	39.75	45.88	50.00	54.00	56.00
	mm	232	257	298	321	397	419	435	473	517	778	854	930	1010	1165	1270	1372	1422
W	in	8	8	10	10	12	14	16	18	20	22	24	24	24	24	24	24	24
	mm	200	200	250	250	300	350	400	450	500	560	600	610	610	610	610	610	610
H (open)	in	16.1	17.8	20	24.1	26.4	31.7	39.4	47.6	55.7	62.3	67.9	77.1	86.4	102.3	117.6	122.8	126.2
	mm	410	453	509	612	670	805	1000	1209	1416	1582	1725	1959	2194	2598	2986	3120	3205
WT (KG)	RF	23	35	50	71	100	144	209	322	482	683	950	1145	1634	2660	3090	3312	3597
	BW	17	26	39	53	79	113	164	256	390	565	805	964	1412	2304	2540	2725	3057

Figure No.
GA0101 1XU
GA0101 2XU
GA0101 3XU

STANDARD MATERIALS OF PARTS

Parts	Materials
Body	ASTM A216-WCB
Bonnet	ASTM A216-WCB
Stem	ASTM A182-F6a
Wedge	ASTM A216-WCB/Cr13 Overlay ASTM A217-CA15(10" & smaller)
Yoke sleeve	ASTM A439 D-2
Gland flange	ASTM A216-WCB
Handwheel	Ductile iron
Seat ring	ASTM A105+STL. Overlay
Back seat	ASTM A276-420
Gland	ASTM A276-420
Gasket	Reinforced graphite
Packing	Graphite
Retaining nut	Carbon steel
Bonnet stud/nut	ASTM A193-B7/ASTM A194-2H
Gland bolt/nut	ASTM A193-B7/ASTM A194-2H
Spacer ring	ASTM A276-420
Handwheel nut	Carbon steel
Grease fitting	Steel
Yoke	ASTM A216-WCB



DIMENSIONS AND WEIGHTS

NPS DN	in mm	2 50	2-1/2 65	3 80	4 100	5 125	6 150	8 200	10 250	12 300	14 350	16 400	18 450	20 500	24 600	26 650	28 700	30 750	32 800	36 900
L	in	7	7.5	8	9	10	10.5	11.5	13	14	15	16	17	18	20	22	24	24	26	28
(RF)	mm	178	191	203	229	254	267	292	330	356	381	406	432	457	508	559	610	610	660	711
L1	in	8.5	9.5	11.12	12	15	15.88	16.5	18	19.75	22.5	24	26	28	32	34	36	36	38	40
(BW)	mm	216	241	283	305	381	403	419	457	502	572	610	660	711	813	864	914	914	965	1016
L2	in	7.5	8	8.5	9.5	10.5	11	12	13.5	14.5	15.5	16.5	17.5	18.5	20.5	-	-	-	-	-
(RTJ)	mm	191	203	216	241	267	279	305	343	368	394	419	445	470	521	-	-	-	-	-
W	in	8	8	10	12	12	12	14	16	18	20	22	24	27	30	24	24	24	24	24
	mm	200	200	250	300	300	300	350	400	450	500	560	600	680	760	610	610	610	610	610
H	in	15.2	17.1	18.9	23	26.8	30.1	37.6	45.2	53.2	59.4	67	74.5	83.4	98.4	110	117	124	129	146
(open)	mm	386.5	434.5	480.5	584.5	681	765	956	1149	1350.5	1508	1703	1892	2119	2500	2806	2960	3148	3281	3721
WT	RF	18	25	32	50	64	77	121	178	265	362	463	621	792	1144	1570	1900	3310	2540	3380
(KG)	BW	15	18	26	41	58	69	108	156	248	330	424	587	752	1190	1521	1838	2261	2490	3310

Class 900/1500/2500 Cast Steel Gate Valve

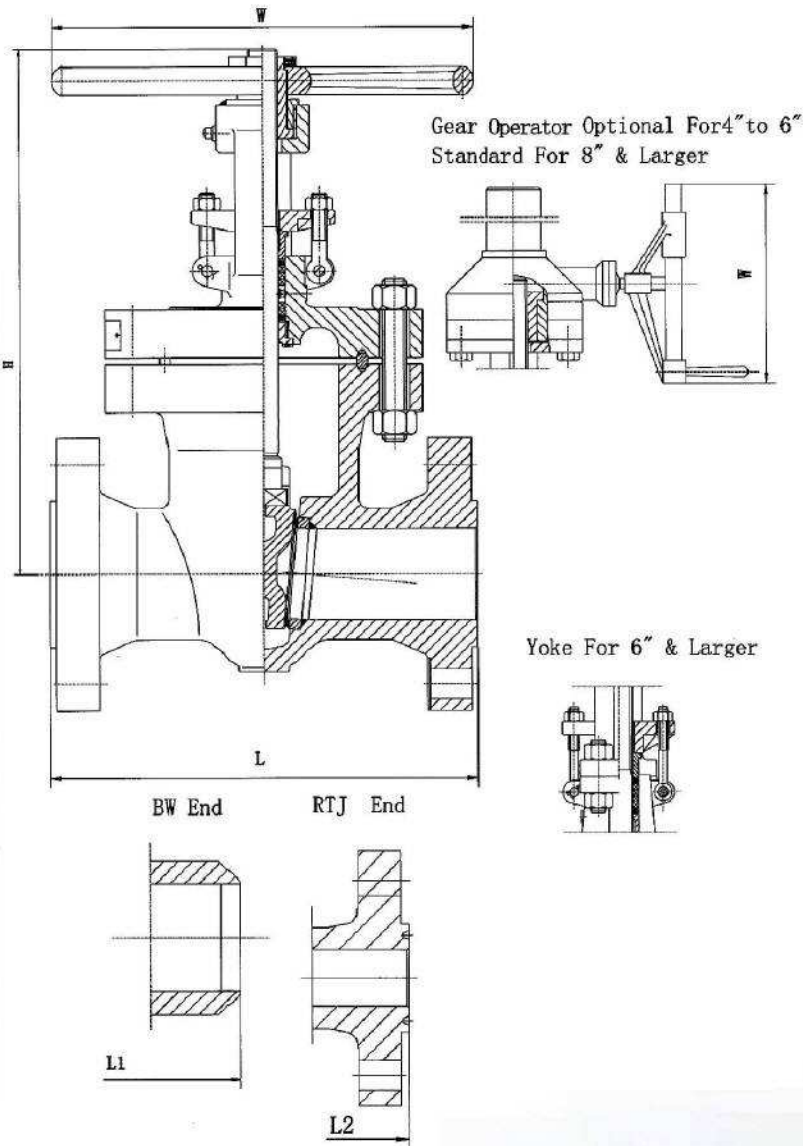


Figure No.

GA0901 1XU	GA1501 1XU	GA2501 1XU
GA0901 2XU	GA1501 2XU	GA2501 2XU
GA0901 3XU	GA1501 3XU	GA2501 3XU

STANDARD MATERIALS OF PARTS

Parts	Materials
Body	ASTM A216-WCB
Bonnet	ASTM A216-WCB
Stem	ASTM A182-F6a
Wedge	ASTM A216-WCB+STL Overlay
Yoke sleeve	ASTM A439 D-2
Gland flange	ASTM A216-WCB
Handwheel	Ductile iron
Seat ring	ASTM A105+STL. Overlay
Back seat	ASTM A276-420
Gland	ASTM A276-420
Gasket	Soft iron
Packing	Graphite
Retaining nut	Carbon steel
Bonnet stud/nut	ASTM A193-B7/ASTM A194-2H
Gland bolt/nut	ASTM A193-B7/ASTM A194-2H
Spacer ring	ASTM A276-420
Handwheel nut	Carbon steel
Grease fitting	Steel
Yoke	ASTM A216-WCB



DIMENSIONS AND WEIGHTS

	NPS DN	in mm	2	2-1/2	3	4	6	8	10	12	14	16
			50	65	80	100	150	200	250	300	350	400
900#	L-L1 (RF-BW)	in mm	14.5 368	16.5 419	15 381	18 457	24 610	29 737	33 838	38 965	40.5 1029	44.5 1130
	L2 (RTJ)	in mm	14.62 371	16.62 422	15.12 384	18.12 460	24.12 613	29.12 740	33.12 841	38.12 968	40.88 1038	44.88 1140
	W	in mm	10 250	10 250	12 300	14 350	20 500	24 600	24 610	24 610	24 610	24 610
	H (open)	in mm	19.6 498	21.5 547	22.6 573	26.7 678	35.4 900	43.4 1103	53 1345	59.8 1520	74.9 1902	80.7 2051
	WT (KG)	RF BW	74 54	131 105	101 78	172 135	335 260	640 517	1100 922	1600 1381	2250 2009	2850 2563
	1500#	L-L1 (RF-BW)	in mm	14.5 368	16.5 419	18.5 470	21.5 546	27.75 705	32.75 832	39 991	44.5 1130	49.5 1257
L2 (RTJ)		in mm	14.62 371	16.62 422	18.62 473	21.62 549	28.00 711	33.13 842	39.38 1000	45.12 1146	50.25 1276	55.38 1407
W		in mm	10 250	12 300	14 350	20 500	24 600	18 458	18 458	24 610	24 610	24 610
H (open)		in mm	19.2 487	22.5 572	23.7 603	27.6 700	38.7 984	45.1 1146	54 1371	64.3 1633	70.8 1798	77.3 1963
WT (KG)		RF BW	74 54	131 105	165 129	248 197	510 412	921 761	1910 1640	3145 2755	4100 3200	6200 5300
2500#		L-L1 (RF-BW)	in mm	17.75 451	20 508	22.75 578	26.5 673	36 914	40.25 1022	50 1270	56 1422	-
	L2 (RTJ)	in mm	17.88 454	20.25 514	23.00 584	26.88 683	36.50 927	40.88 1038	50.88 1292	56.88 1445	-	-
	W	in mm	14 350	18 450	18 450	20 500	24 610	24 610	24 610	24 610	-	-
	H (open)	in mm	22.2 563	22.2 563	22.9 582	34.3 870	57.1 1450	63.4 1610	81.7 2076	89.8 2281	-	-
	WT (KG)	RF BW	130 95	200 150	245 175	490 375	1600 1310	2450 2010	4570 3800	7150 6000	-	-