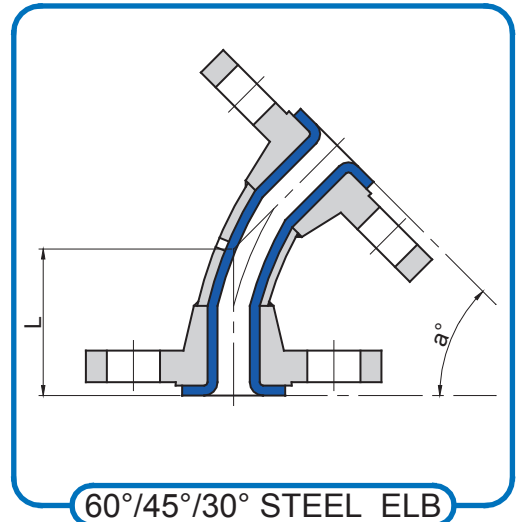
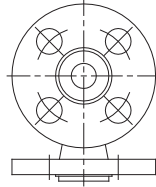


90° STEEL ELBOW

Orientation of Fixed Flange  
for 1" to 3" Sizes



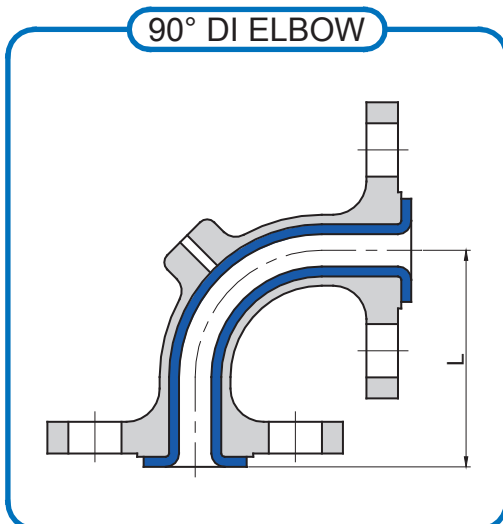
60°/45°/30° STEEL ELB

NB	L (mm)				Weight (kg)			
	a=90°	a=45°	a=60°	a=30°	90°	45°	60°	30°
#150								
1/2"	65	44	52	40	1.0	0.9	0.9	0.9
3/4"	75	44	72	59	1.4	1.3	1.3	1.3
1"	89 <sup>1</sup>	44 <sup>4</sup>	98	77	2.2	2.1	2.1	2.1
1 1/2"	102 <sup>1</sup>	57	92	78	3.8	3.4	3.5	3.2
2"	114 <sup>1</sup>	64	110	86	5.9	5.3	5.5	5.1
3"	140 <sup>1</sup>	76	110	75	11.5	10.0	10.5	9.5
4"	165	102	135	90	16.7	14.2	15.1	13.4
6"	203	127	180	110	26.6	21.2	22.9	19.4
8"	229	140	235	140	44.3	34.7	37.9	31.6
10"	279	165			62.4	48.4		
12"	305	190			86.3	70.7		
14"	356	190			117	93.1		
16"	*450	203			156	121		
18"	*475	216			179	138		
20"	*810 <sup>3</sup>	*343 <sup>2</sup>			538	341		
24"	*974 <sup>3</sup>	*412 <sup>2</sup>			693	493		

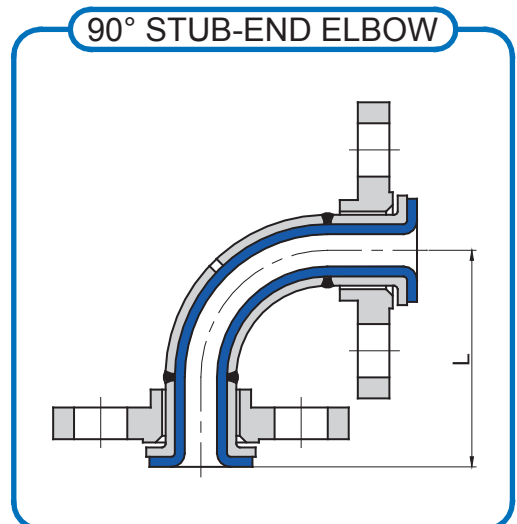
Notes:

- 1) Available in Ductile Iron
- 2) Two part construction
- 3) Three part construction
- 4) Optional threaded bolt holes 4 x 1/2" for easy installation.

\* Does not conform to ANSI B16.5



90° DI ELBOW



90° STUB-END ELBOW